



Snapdry

KEEPING FEET AND HANDS
WARM & DRY

WHEN HAND AND FOOTWEAR ARE WET

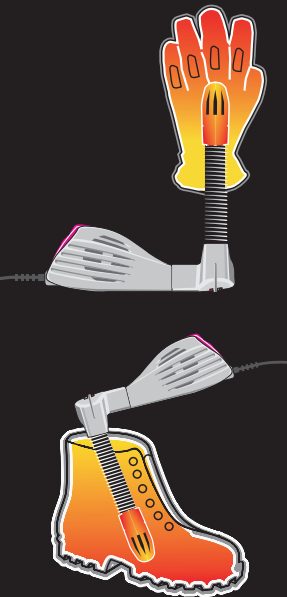
Wet outside conditions often contribute to damp, even drenched hand and footwear. At the same time, moisture buildup from perspiration contributes significantly as well. Once damp, hands and feet can become uncomfortable, even cold. If damp conditions persist, increases in bacterial and fungal growth can cause unpleasant health conditions for hands and feet and further their discomfort.



HOTRONIC KEEPS HAND AND FOOTWEAR DRY

By providing a gentle air and heat, damp conditions from moisture buildup are reversed deep within the hand and footwear materials. A dry, comfortable, healthy environment is created.

Using Hotronic's Snapdry Boot & Glove Dryer on a consistent basis maximizes the potential for dry, comfortable, healthy hands and feet.



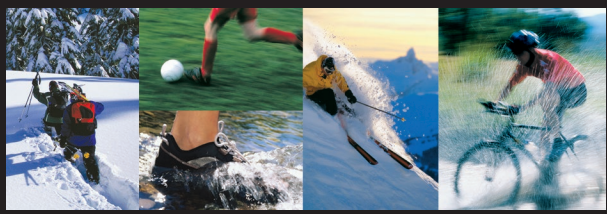
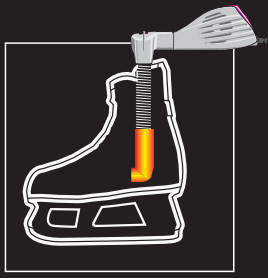
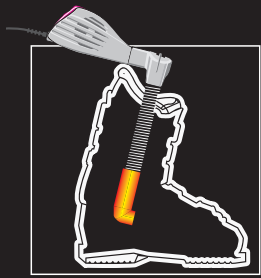
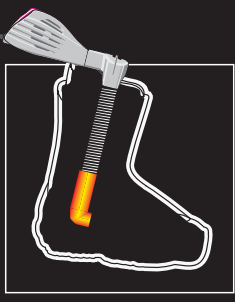
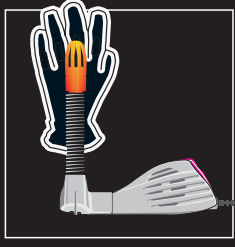
QUIET, LIGHTWEIGHT, CONVENIENT!



HOTRONIC'S SNAPDRY BOOT & GLOVE DRYER

- Quietly dries and pre-warms with gentle air and heat.
- For use in all types of hand and footwear.
- Works in all sizes.
- Dries within one to five hours.
- Maintains a dry, comfortable, healthy environment when consistently drying hand and footwear. Minimizes potential bacterial and fungal growth. Maximizes potential for dry, comfortable, healthy hands and feet.
- Pre-warms hand and footwear. Enhances circulation. Keeps hands and feet warmer longer.

WORKS IN TALL TO LOW CUT FOOTWEAR; MITTENS AND GLOVES!





HOTRONIC'S SNAPDRY SYSTEM

- Quiet, long lasting motor maximizes use of Dryer. Any season. Any time.
- Built-in timer provides up to 24 hours maximum drying time.
- Power indicator light confirms Dryer is on or off.
- Patented "Quick Clip" system inserts in seconds into boots, shoes, gloves, and mittens. Holds hand and footwear together. Protects upper air deflector from damage.
- Integrated hand wear stand conveniently dries mittens and gloves.
- Separately dries hand and footwear. Minimizes potential transfer of bacteria and fungus.
- Dual voltage selector switch (120V/230V) simplifies international travel.
- Packs for travel inside boots or included storage bag.